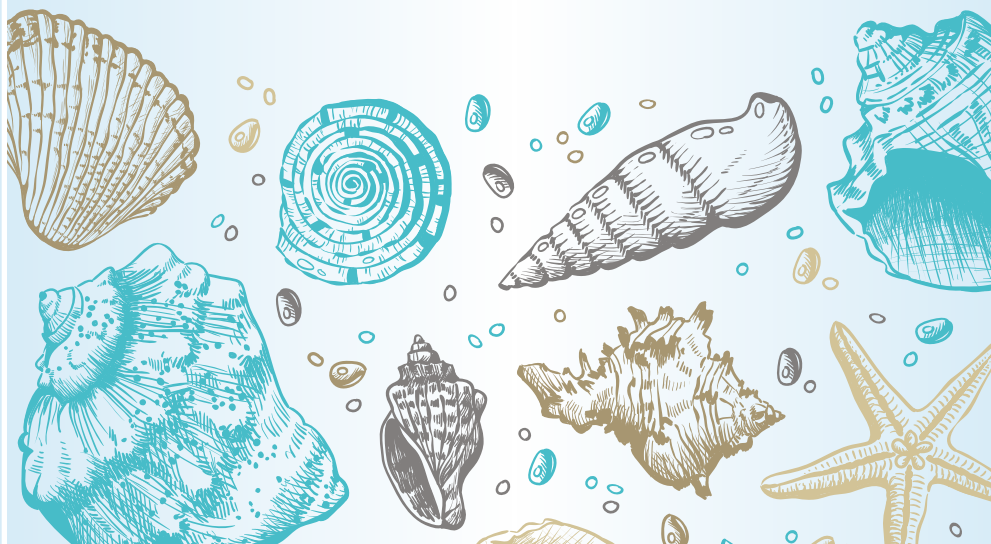




The Nab

Bar & Eatery

DRINKS MENU





WINE

SPARKLING

Freixenet Prosecco *Italy (11%)*

Golden straw colour with lively effervescence and fresh aromas of citrus, apple and flowers. Clean and fresh on the palate with tones of ripe lemon, green apple and grapefruit. The finish is light and fresh.

Single serve bottle **9.95**

Freixenet Italian Sparkling Rosé *Italy (11%)*

With delicate pink hues, Freixenet Italian Sparkling Rosé is light and effervescent. Enjoy notes of fresh red berries and underlying hints of white flowers and apples.

Single serve bottle **9.95**

Chio Prosecco *Italy (11%)*

With fresh, zesty aromas and flavours of citrus and green fruit on the palate, this crisp wine boasts a pleasant finish.

Bottle **29.95**

Madam Sass Prosecco Rosé *Italy (11%)*

Full of effervescence and attitude! A delicate pink colour, fine, creamy-white and persistent bubbles. Notes of red berries and flowers on the nose followed by a swathe of soft summer fruits on the palate.

Bottle **29.95**

Joseph Perrier Cuvee Royale Brut Champagne *France (12%)*

Length, freshness, balance, elegance and lightness. The nose is delicate, fine and complex. Notes of green apple and vine peach bring a fruity touch. Nice roundness on the palate with long and refreshing finish.

Bottle **54.95**

ROSÉ

Canyon Road White Zinfandel *USA (9%)*

This wine is light-bodied with hints of strawberry, cherry and watermelon flavours and has a smooth, crisp finish.

175ml **6.15** | 250ml **8.40** | Bottle **23.95**

Principato Pinot Grigio Blush *Italy (12%)*

Appealing, lightly aromatic nose with redcurrant and cherry notes. The palate is crisp with strawberry and white peach fruit characters leading to a fresh and juicy finish.

175ml **6.25** | 250ml **8.55** | Bottle **24.50**

RED

Bouchon Reserva Cabernet Sauvignon *Chile (14%)*

This classic cabernet boasts notes of blackcurrant, cherry and other black and red fruits. It presents soft, elegant tannins and great balance.

Bottle **34.95**

Canyon Road Merlot *USA (13%)*

With a soft and elegant mouthfeel, this wine has deep flavours of rich cherries and jammy blackberries, followed by hints of vanilla and spice.

175ml **6.15** | 250ml **8.40** | Bottle **23.95**

Lodez Pinot Noir *France (12%)*

Bright, ruby colour. A complex intertwining of fruity and savoury aromas and flavours of wild cherry, raspberries and mulberries.

175ml **6.40** | 250ml **8.75** | Bottle **24.95**

Squealing Pig Malbec *Argentina (13.5%)*

Bursting with dark fruit flavours and hints of leather and spice, the richly fruited palate is balanced superbly by the tannins and acidity of the long supple finish.

175ml **7.65** | 250ml **10.50** | Bottle **29.95**

WHITE

Jean Julien Chardonnay *France (12.5%)*

Fresh tropical fruit nose. Bright fruity mouth with mid palate weight and a tight finish.

175ml **6.90** | 250ml **9.45** | Bottle **26.95**

La Lancelotta Gavi *Italy (11.5%)*

Fresh citrus and stone fruit aromas, with lightly floral notes. The palate has apple and pear characters balanced by hints of apricot, white spice and crisp lemony acidity on the finish.

Bottle **32.95**

Principato Pinot Grigio *Italy (12%)*

Shows delicate, floral and fruity aromas with a hint of stone fruit. The palate is crisp with citrus characters and a limey, refreshing finish.

175ml **6.40** | 250ml **8.75** | Bottle **24.95**

Squealing Pig Sauvignon Blanc *New Zealand (13.5%)*

Exploding with lime, pineapple and fresh cut grass on the nose. On the palate, lime coupled with zingy grapefruit and white peach.

175ml **7.30** | 250ml **9.95** | Bottle **28.50**

125ml wine measures also available on selected products.

BEER AND CIDER

DRAUGHT

Atlantic Ale (4.5%) Half **2.95** | Pint **5.80**

Brewdog Punk IPA (5.2%) Half **3.60** | Pint **7.05**

Coors (4%) Half **2.80** | Pint **5.45** | Pitcher **20.35**

Guinness (4.1%) Half **3.00** | Pint **5.90**

Madri (4.6%) Half **2.95** | Pint **5.80** | Pitcher **21.45**

Offshore (4.8%) Half **3.10** | Pint **6.05** | Pitcher **22.05**

Aspall (4.5%) Half **2.90** | Pint **5.65**

Carling Black Fruits Cider (4%) Half **3.10** | Pint **6.20**

BOTTLES

Budweiser (4.5%) 330ml **5.05**

Corona (4.5%) 330ml **5.05**

Peroni (5.1%) 330ml **5.05**

Peroni Gluten Free (5.1%) 330ml **5.05**

Rekorderlig Strawberry and Lime (4%) 500ml **6.40**

Rekorderlig Wild Berries (4%) 500ml **6.40**

NON-ALCOHOLIC

Peroni Alcohol Free 74 kcal 330ml **5.05**

OTHER BOTTLED

WKD Blue (4%) 275ml **5.05**

WKD Orange and Passion Fruit (4%) 275ml **5.05**

WKD Pink Gin (4%) 275ml **5.05**

If you have a food allergy, intolerance or coeliac disease, please speak to a team member about the ingredients in your food and drink before you order. Thank you.



GIN

All gin served in 25ml measures

CITRUS

AxleJack (40%)	4.25
Bombay Sapphire (40%)	4.25
Gordon's Mediterranean Orange (37.5%)	4.25
Gordon's Sicilian Lemon (37.5%)	4.25
Malfy con Arancia (Blood Orange) (41%)	5.05
Malfy con Limone (Lemon) (41%)	5.05
Sipsmith Lemon Drizzle (40.4%)	4.45
Tanqueray 10 (47.3%)	5.05
Tanqueray Sevilla (41.3%)	4.45
Tarquin's Blood Orange (38%)	4.80

FLORAL

Gordon's Elderflower (37.5%)	3.90
-------------------------------------	------

JUNIPER

Beefeater Dry (40%)	3.90
Gordon's (37.5%)	3.65
Plymouth (41.2%)	4.80
Sipsmith London Dry (41.6%)	5.05
Tanqueray (43.1%)	4.45

FRUITY

Beefeater Pink Strawberry (37.5%)	3.90
Ginting Passion Fruit (42.5%)	5.05
Gordon's Pink (37.5%)	3.90
Hendrick's (41.4%)	4.45
Kopparberg Mixed Fruit (37.5%)	3.90
Kopparberg Strawberry and Lime (37.5%)	3.90
Malfy Rosa (Grapefruit and Rhubarb) (41%)	5.05
Slingsby Rhubarb (40%)	5.05
Tarquin's British Blackberry (40%)	4.80
Tarquin's Rhubarb and Raspberry (38%)	4.80
Tarquin's Strawberry and Lime (38%)	4.80
Verano Watermelon (40%)	5.05

SPICED

Tarquin's Cornish Dry (42%)	4.45
------------------------------------	------

NON-ALCOHOLIC

Seedlip Grove 42 Citrus 5 kcal	3.65
Seedlip Spice 94 Aromatic 5 kcal	3.65

SPIRITS

All spirits served in 25ml measures

LIQUEUR

Amaretto Disaronno (28%)	4.15
Archers (18%)	3.65
Cointreau (40%)	3.65
Malibu (21%)	3.65
Tia Maria (20%)	3.65

WHISKY

Bells (40%)	3.65
Bulleit Bourbon (45%)	4.45
Haig Club (40%)	5.10
Haig Club Mediterranean Orange (35%)	3.55
Highland Park (40%)	5.10
Jack Daniels (40%)	3.65
Jameson (40%)	3.65
Johnnie Walker Black (40%)	3.90
Johnnie Walker Red (40%)	3.65
Southern Comfort (35%)	3.65
Talisker 10 Year Old Malt (45.8%)	4.25

BRANDY

Courvoisier (40%)	3.90
Jules Clairon (36%)	3.65

VODKA

Ciroc (40%)	4.45
Grey Goose (40%)	4.45
Grey Goose Citron (40%)	4.45
Smirnoff Red (37.5%)	3.65
Smirnoff Mango and Passionfruit (35%)	4.25
Smirnoff Raspberry Crush (37%)	4.25
Smirnoff Vanilla (37.5%)	4.25

RUM

Bacardi (37.5%)	3.65
Captain Morgan (40%)	3.65
Captain Morgan Sliced Apple (25%)	4.25
Captain Morgan Spiced (35%)	3.65
Captain Morgan Tiki Mango and Pineapple (25%)	4.25
Captain Morgan White (37.5%)	3.65
Koko Kanu (37.5%)	4.45
Kraken Black Spiced (40%)	4.45
Twin Fin Barrel Aged (40%)	4.25
Twin Fin Coconut and Lychee (38%)	4.25
Twin Fin Pineapple and Grapefruit (38%)	4.25
Twin Fin Spiced Golden (38%)	4.25

If you have a food allergy, intolerance or coeliac disease, please speak to a team member about the ingredients in your food and drink before you order. Thank you.

COCKTAILS

Aperol Spritz

A refreshing aperitif, served the classic Italian way with fresh orange, prosecco and soda.

Espresso Martini

Freshly ground coffee is shaken up with vodka, sugar and coffee liqueur to create this rich, dark delight.

French Martini

Raspberry liqueur, Smirnoff Red and pineapple juice topped with fresh raspberries.

Passion Fruit Martini

Vodka is shaken with passion fruit liqueur, pineapple juice and vanilla syrup. Served with a shot of prosecco on the side.

Rosamunde

Created by Isobel Ings, our Bartender of the Year 2022.

A refreshing blend of Away Resorts AxleJack Gin and Cointreau, topped with elderflower tonic and lemon juice, with a hint of sea salt and rosemary.

9.30

Long Island Iced Tea

Five classic white spirits; vodka, rum, gin, Cointreau and tequila, shaken with a sweet and sour mix topped with Pepsi Max.

9.30

Mojito

Fresh mint, lime, white rum and sugar topped with soda water. Enjoy it classic or with spiced rum and ginger ale.

9.30

Piña Colada

Enjoy a taste of the Caribbean with this tropical infusion of rum, coconut and pineapple.

9.30

Strawberry Daiquiri

Beat the heat with this classic sweet and sour sensation! White rum, sweet strawberries and zesty lime.

9.30

Sun on The Beach

The epitome of easy drinking! Vodka, Archers and a fruity mix of orange and cranberry juice.

9.30

9.30

9.30

9.30

9.30

MOCKTAILS

Raspberry Ripple 95 kcal

A rich and indulgent marriage of raspberry, cranberry, pineapple and lime; without the morning headache.

6.25

Passion Fruit Paradise 113 kcal

They don't come much fruitier than this vibrant blend of real passion fruit and fresh pineapple juice.

6.25

Missing Sunrise 161 kcal

A colourful, flavoursome mocktail that mixes cranberry and orange juice and layers of grenadine.

6.25

No-jito 212 kcal

This refreshing twist on the classic Mojito uses apple to give it a fruity kick.

6.25

SOFT DRINKS

SPARKLING

Lemonade Child 1.85 / Small 3.55 / Regular 4.00
5 kcal / 8 kcal / 10 kcal

Pepsi Max Child 1.85 / Small 3.55 / Regular 4.00
1 kcal / 2 kcal / 2 kcal

Diet Pepsi Child 1.85 / Small 3.55 / Regular 4.00
1 kcal / 2 kcal / 2 kcal

Pepsi 135 kcal 3.90

Britvic 55 Apple 127 kcal 3.65

JUICES

J20 Apple and Raspberry 52 kcal 3.90

J20 Orange and Passion Fruit 52 kcal 3.90

Apple Juice 96 kcal 2.00

Orange Juice 94 kcal 2.00

Pip Organic Cloudy Apple 77 kcal 2.40

Pip Organic Strawberry and Blackcurrant 74 kcal 2.40

MIXERS

Britvic Slimline Tonic 2 kcal 2.00

Britvic Tonic 38 kcal 2.00

Fever-Tree Slimline Tonic 30 kcal 2.55

Fever-Tree Ginger Ale 68 kcal 2.55

Fever-Tree Indian Tonic 56 kcal 2.55

Fever-Tree Mediterranean Tonic 74 kcal 2.55

WATER

Harrogate Still Water 0 kcal Small 2.85 / Large 5.05

Harrogate Sparkling Water 0 kcal Small 2.85 / Large 5.05

CALIPPO SLUSH

Calippo Iced Slush Small 2.95 / Large 4.25
46 kcal / 64 kcal

Calippo Refillable Lollicup 70 kcal 6.95
Comes filled with your favourite slush, then it's yours to take home.

Calippo Lollicup Refill 70 kcal 3.45
Stay refreshed and refill your lollicup throughout your holiday.



If you have a food allergy, intolerance or coeliac disease, please speak to a team member about the ingredients in your food and drink before you order. Thank you.



HOT DRINKS

COFFEE

	Tall	Grande
Caffè Latte 144 kcal / 181 kcal	3.45	3.80
Caffè		
Americano 11 kcal / 17 kcal	3.00	3.50
Caffè Mocha 196 kcal / 250 kcal	4.25	4.70
Cappuccino 130 kcal / 144 kcal	3.45	3.80
Caramel		
Macchiato 183 kcal / 234 kcal	4.25	4.70
	Single	Double
Espresso 6 kcal / 11 kcal	2.30	2.70

TEA

	Tall	Grande
Breakfast Tea 0 kcal	2.75	3.05
Chai Tea 121 kcal / 155 kcal	4.25	4.70

HOT CHOCOLATE

	Tall	Grande
Classic Hot		
Chocolate 234 kcal / 284 kcal	4.10	4.70

ICED COFFEE

	Tall	Grande
Iced Caffè		
Latte 102 kcal / 126 kcal	3.45	3.80
Iced Caffè		
Americano 11 kcal / 17 kcal	3.00	3.50
Iced Caffè		
Mocha 257 kcal / 337 kcal	4.25	4.70
Iced Caramel		
Macchiato 159 kcal / 201 kcal	4.25	4.70

ICED TEA

	Tall	Grande
Iced Tea 0 kcal	2.75	3.05
Iced Chai Tea 121 kcal / 155 kcal	4.25	4.70

ADD A LITTLE EXTRA...

Espresso Extra Shot 6 kcal	0.70
Syrups 6 kcal	0.70



TABLE ORDERING
AVAILABLE...
Scan to order



If you have a food allergy, intolerance or coeliac disease, please speak to a team member about the ingredients in your food and drink before you order. Thank you.

Calories shown are per drink. Adults need around 2000 kcal a day. All prices include VAT. All card and cash tips are shared out to all employees through a system controlled by a team representative. No monies are deducted by Away Resorts. Tips are paid on top of a team member's wage. If you have any queries about how tips are distributed, please ask.

