

The Spitfire



DRINKS MENU

WINE

SPARKLING

Freixenet Prosecco Italy (11%)

Golden straw colour with lively effervescence and fresh aromas of citrus, apple and flowers. Clean and fresh on the palate with tones of ripe lemon, green apple and grapefruit. The finish is light and fresh.

Single serve bottle **9.95**

Freixenet Italian Sparkling Rosé Italy (11%)

With delicate pink hues, Freixenet Italian Sparkling Rosé is light and effervescent. Enjoy notes of fresh red berries and underlying hints of white flowers and apples.

Single serve bottle **9.95**

Chio Prosecco Italy (11%)

With fresh, zesty aromas and flavours of citrus and green fruit on the palate, this crisp wine boasts a pleasant finish.

Bottle **29.95**

Madam Sass Prosecco Rosé Italy (11%)

Full of effervescence and attitude! A delicate pink colour, fine, creamy-white and persistent bubbles. Notes of red berries and flowers on the nose followed by a swathe of soft summer fruits on the palate.

Bottle **29.95**

Joseph Perrier Cuvée Royale

Brut Champagne France (12%)

Length, freshness, balance, elegance and lightness. The nose is delicate, fine and complex. Notes of green apple and vine peach bring a fruity touch. Nice roundness on the palate with long and refreshing finish.

Bottle **54.95**

ROSÉ

Canyon Road White Zinfandel USA (9%)

This wine is light-bodied with hints of strawberry, cherry and watermelon flavours and has a smooth, crisp finish.

175ml **6.15** | 250ml **8.40** | Bottle **23.95**

Principato Pinot Grigio Blush Italy (12%)

Appealing, lightly aromatic nose with redcurrant and cherry notes. The palate is crisp with strawberry and white peach fruit characters leading to a fresh and juicy finish.

175ml **6.25** | 250ml **8.55** | Bottle **24.50**

RED

Bouchon Reserva Cabernet

Sauvignon Chile (14%)

This classic cabernet boasts notes of blackcurrant, cherry and other black and red fruits. It presents soft, elegant tannins and great balance.

Bottle **34.95**

Canyon Road Merlot USA (13%)

With a soft and elegant mouthfeel, this wine has deep flavours of rich cherries and jammy blackberries, followed by hints of vanilla and spice.

175ml **6.15** | 250ml **8.40** | Bottle **23.95**

Lodez Pinot Noir France (12%)

Bright, ruby colour. A complex intertwining of fruity and savoury aromas and flavours of wild cherry, raspberries and mulberries.

175ml **6.40** | 250ml **8.75** | Bottle **24.95**

Squealing Pig Malbec Argentina (13.5%)

Bursting with dark fruit flavours and hints of leather and spice, the richly fruited palate is balanced superbly by the tannins and acidity of the long supple finish.

175ml **7.65** | 250ml **10.50** | Bottle **29.95**

WHITE

Jean Julien Chardonnay

France (12.5%)

Fresh tropical fruit nose. Bright fruity mouth with mid palate weight and a tight finish.

175ml **6.90** | 250ml **9.45** | Bottle **26.95**

La Lancelotta Gavi Italy (11.5%)

Fresh citrus and stone fruit aromas, with lightly floral notes. The palate has apple and pear characters balanced by hints of apricot, white spice and crisp lemony acidity on the finish.

Bottle **32.95**

Principato Pinot

Grigio Italy (12%)

Shows delicate, floral and fruity aromas with a hint of stone fruit. The palate is crisp with citrus characters and a limey, refreshing finish.

175ml **6.40** | 250ml **8.75** | Bottle **24.95**

Squealing Pig Sauvignon

Blanc New Zealand (13.5%)

Exploding with lime, pineapple and fresh cut grass on the nose. On the palate, lime coupled with zingy grapefruit and white peach.

175ml **7.30** | 250ml **9.95** | Bottle **28.50**

125ml wine measures also available on selected products.

BEER AND CIDER

DRAUGHT

Brewdog Punk IPA (5.2%) Half **3.60** | Pint **7.05**

Coors (4%) Half **2.80** | Pint **5.45** | Pitcher **20.35**

Guinness (4.1%) Half **3.00** | Pint **5.90**

Madri (4.6%) Half **2.95** | Pint **5.80** | Pitcher **21.45**

Worthington's (3.6%) Half **2.80** | Pint **5.45** | Pitcher **20.35**

Aspall (4.5%) Half **2.90** | Pint **5.65**

Carling Black Fruits Cider (4%) Half **3.10** | Pint **6.20**

BOTTLES

Budweiser (4.5%) 330ml **5.05**

Corona (4.5%) 330ml **5.05**

Peroni (5.1%) 330ml **5.05**

Peroni Gluten Free (5.1%) 330ml **5.05**

Rekorderlig Strawberry and Lime (4%) 500ml **6.40**

Rekorderlig Wild Berries (4%) 500ml **6.40**

NON-ALCOHOLIC

Peroni Alcohol Free 74 kcal 330ml **5.05**

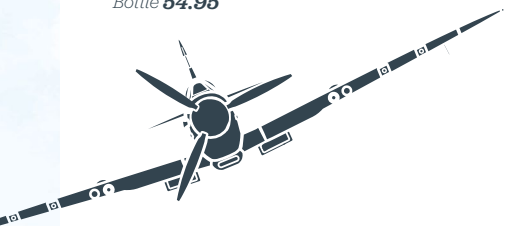
OTHER BOTTLED

WKD Blue (4%) 275ml **5.05**

WKD Orange and Passion Fruit (4%) 275ml **5.05**

WKD Pink Gin (4%) 275ml **5.05**

If you have a food allergy, intolerance or coeliac disease, please speak to a team member about the ingredients in your food and drink before you order. Thank you.



GIN

All gin served in 25ml measures

CITRUS

AxleJack (40%)	4.25
Bombay Sapphire (40%)	4.25
Gordon's Mediterranean Orange (37.5%)	4.25
Gordon's Sicilian Lemon (37.5%)	4.25
Malfy con Arancia (Blood Orange) (41%)	5.05
Malfy con Limone (Lemon) (41%)	5.05
Sipsmith Lemon Drizzle (40.4%)	4.45
Tanqueray 10 (47.3%)	5.05
Tanqueray Sevilla (41.3%)	4.45
Tarquin's Blood Orange (38%)	4.80

FLORAL

Gordon's Elderflower (37.5%)	3.90
-------------------------------------	------

JUNIPER

Beefeater Dry (40%)	3.90
Gordon's (37.5%)	3.65
Plymouth (41.2%)	4.80
Sipsmith London Dry (41.6%)	5.05
Tanqueray (43.1%)	4.45

FRUITY

Beefeater Pink Strawberry (37.5%)	3.90
Ginting Passion Fruit (42.5%)	5.05
Gordon's Pink (37.5%)	3.90
Hendrick's (41.4%)	4.45
Kopparberg Mixed Fruit (37.5%)	3.90
Kopparberg Strawberry and Lime (37.5%)	3.90
Malfy Rosa (Grapefruit and Rhubarb) (41%)	5.05
Slingsby Rhubarb (40%)	5.05
Tarquin's British Blackberry (40%)	4.80
Tarquin's Rhubarb and Raspberry (38%)	4.80
Tarquin's Strawberry and Lime (38%)	4.80
Verano Watermelon (40%)	5.05

SPICED

Tarquin's Cornish Dry (42%)	4.45
------------------------------------	------

NON-ALCOHOLIC

Seedlip Grove 42 Citrus 5 kcal	3.65
Seedlip Spice 94 Aromatic 5 kcal	3.65

SPIRITS

All spirits served in 25ml measures

LIQUEUR

Amaretto Disaronno (28%)	4.15
Archers (18%)	3.65
Cointreau (40%)	3.65
Malibu (21%)	3.65
Tia Maria (20%)	3.65

WHISKY

Bells (40%)	3.65
Bulleit Bourbon (45%)	4.45
Haig Club (40%)	5.10
Haig Club Mediterranean Orange (35%)	3.55
Highland Park (40%)	5.10
Jack Daniels (40%)	3.65
Jameson (40%)	3.65
Johnnie Walker Black (40%)	3.90
Johnnie Walker Red (40%)	3.65
Southern Comfort (35%)	3.65
Talisker 10 Year Old Malt (45.8%)	4.25

BRANDY

Courvoisier (40%)	3.90
Jules Clairon (36%)	3.65

VODKA

Ciroc (40%)	4.45
Grey Goose (40%)	4.45
Grey Goose Citron (40%)	4.45
Smirnoff Red (37.5%)	3.65
Smirnoff Mango and Passionfruit (35%)	4.25
Smirnoff Raspberry Crush (37%)	4.25
Smirnoff Vanilla (37.5%)	4.25

RUM

Bacardi (37.5%)	3.65
Captain Morgan (40%)	3.65
Captain Morgan Sliced Apple (25%)	4.25
Captain Morgan Spiced (35%)	3.65
Captain Morgan Tiki Mango and Pineapple (25%)	4.25
Captain Morgan White (37.5%)	3.65
Koko Kanu (37.5%)	4.45
Kraken Black Spiced (40%)	4.45
Twin Fin Barrel Aged (40%)	4.25
Twin Fin Coconut and Lychee (38%)	4.25
Twin Fin Pineapple and Grapefruit (38%)	4.25
Twin Fin Spiced Golden (38%)	4.25

If you have a food allergy, intolerance or coeliac disease, please speak to a team member about the ingredients in your food and drink before you order. Thank you.

SOFT DRINKS

SPARKLING

Lemonade Child 1.85 / Small 3.55 / Regular 4.00
5 kcal / 8 kcal / 10 kcal

Pepsi Max Child 1.85 / Small 3.55 / Regular 4.00
1 kcal / 2 kcal / 2 kcal

Diet Pepsi Child 1.85 / Small 3.55 / Regular 4.00
1 kcal / 2 kcal / 2 kcal

Tango Child 1.85 / Small 3.55 / Regular 4.00
19 kcal / 30 kcal / 38 kcal

Pepsi 135 kcal 3.90

Britvic 55 Apple 127 kcal 3.65

JUICES

J2O Apple and Raspberry 52 kcal 3.90

J2O Orange and Passion Fruit 52 kcal 3.90

Apple Juice 96 kcal 2.00

Orange Juice 94 kcal 2.00

Pip Organic Cloudy Apple 77 kcal 2.40

Pip Organic Strawberry and Blackcurrant 74 kcal 2.40

MIXERS

Britvic Slimline Tonic 2 kcal 2.00

Britvic Tonic 38 kcal 2.00

Fever-Tree Slimline Tonic 30 kcal 2.55

Fever-Tree Ginger Ale 68 kcal 2.55

Fever-Tree Indian Tonic 56 kcal 2.55

Fever-Tree Mediterranean Tonic 74 kcal 2.55

WATER

Harrogate Still Water 0 kcal Small 2.85 / Large 5.05

Harrogate Sparkling Water 0 kcal Small 2.85 / Large 5.05



HOT DRINKS

COFFEE

	Tall	Grande
Caffè Latte 144 kcal / 181 kcal	3.45	3.80

Caffè Americano 11 kcal / 17 kcal	3.00	3.50
--	------	------

Caffè Mocha 196 kcal / 250 kcal	4.25	4.70
--	------	------

Cappuccino 130 kcal / 144 kcal	3.45	3.80
---------------------------------------	------	------

Caramel Macchiato 183 kcal / 234 kcal	4.25	4.70
--	------	------

	Single	Double
Espresso 6 kcal / 11 kcal	2.30	2.70

TEA

	Tall	Grande
Breakfast Tea 0 kcal	2.75	3.05

Chai Tea 121 kcal / 155 kcal	4.25	4.70
-------------------------------------	------	------

HOT CHOCOLATE

	Tall	Grande
Classic Hot Chocolate 234 kcal / 284 kcal	4.10	4.70

ICED COFFEE

	Tall	Grande
Iced Caffè Latte 102 kcal / 126 kcal	3.45	3.80

Iced Caffè Americano 11 kcal / 17 kcal	3.00	3.50
---	------	------

Iced Caffè Mocha 257 kcal / 337 kcal	4.25	4.70
---	------	------

Iced Caramel Macchiato 159 kcal / 201 kcal	4.25	4.70
---	------	------

ICED TEA

	Tall	Grande
Iced Tea 0 kcal	2.75	3.05

Iced Chai Tea 121 kcal / 155 kcal	4.25	4.70
--	------	------

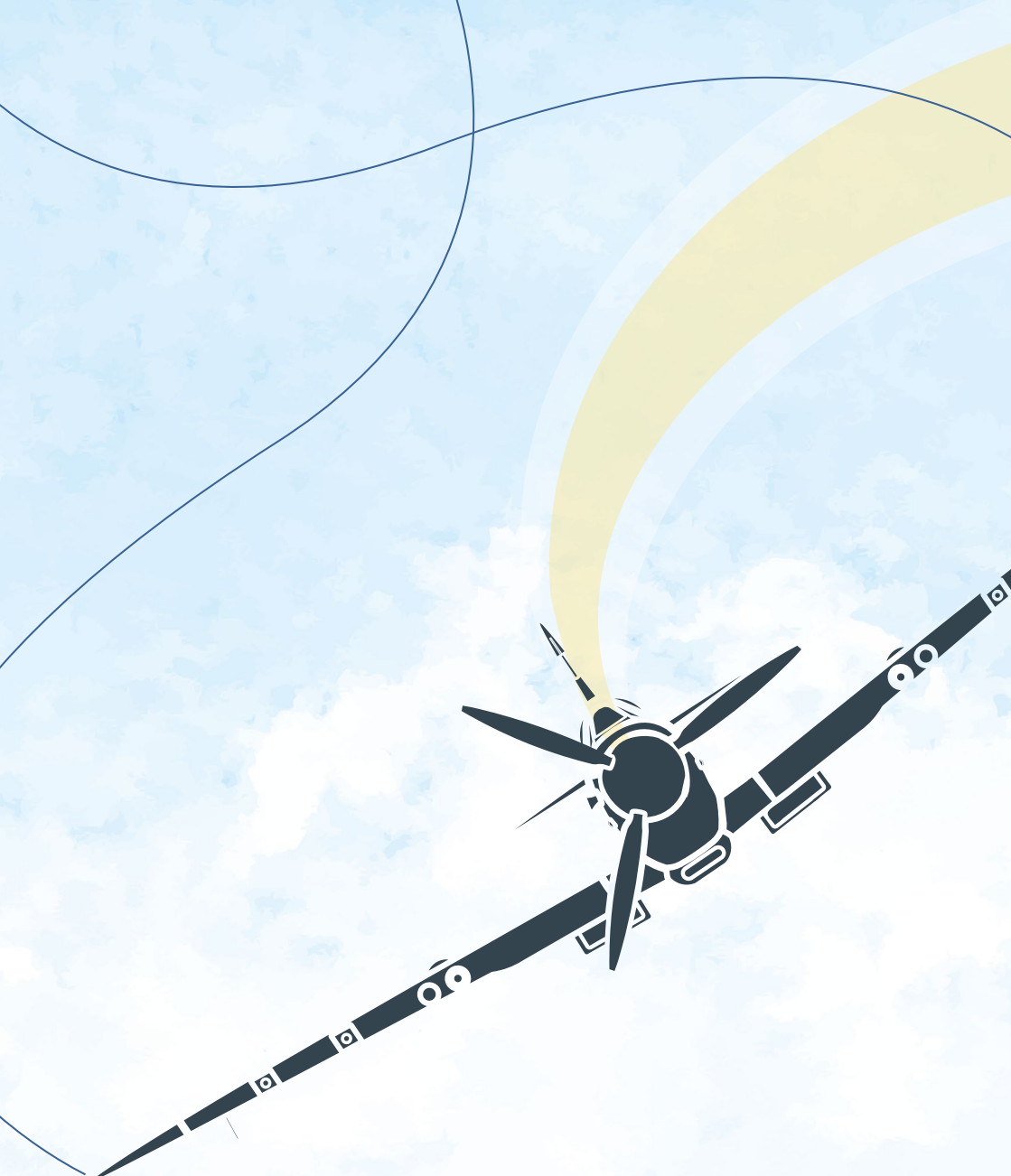


ADD A LITTLE EXTRA...

Espresso Extra Shot 6 kcal	0.70
-----------------------------------	------

Syrups 6 kcal	0.70
----------------------	------

If you have a food allergy, intolerance or coeliac disease, please speak to a team member about the ingredients in your food and drink before you order. Thank you.



Calories shown are per drink. Adults need around 2000 kcal a day. All prices include VAT. All card and cash tips are shared out to all employees through a system controlled by a team representative. No monies are deducted by Away Resorts. Tips are paid on top of a team member's wage. If you have any queries about how tips are distributed, please ask.

