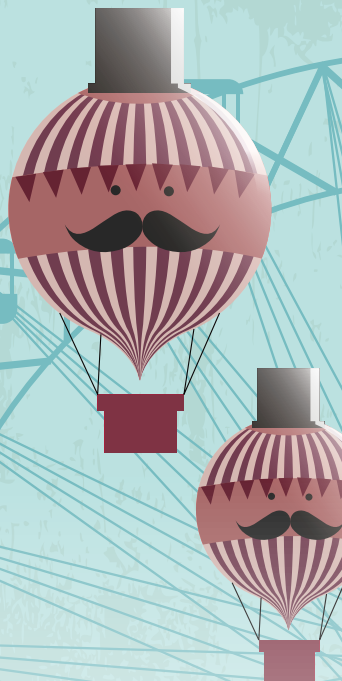


Bar
CAROUSEL

DRINKS MENU



BEER AND CIDER

DRAUGHT

| | |
|--|-----------------------|
| Aspall (4%) | Half 2.60 Pint 5.10 |
| Carling Black Fruits Cider (4%) | Half 2.85 Pint 5.55 |
| Doom Bar (3.6%) | Half 2.70 Pint 5.30 |
| Carling (4%) | Half 2.45 Pint 4.75 |
| Coors (4.0%) | Half 2.50 Pint 4.90 |

BOTTLES

| | |
|---|------------|
| Rekorderlig Strawberry and Lime (4%) | 500ml 5.70 |
| Rekorderlig Wild Berries (4%) | 500ml 5.70 |
| Budweiser (4.5%) | 330ml 4.50 |
| Corona (4.5%) | 330ml 4.50 |
| Peroni (5.1%) | 330ml 4.50 |
| Peroni Gluten Free (5.1%) | 330ml 4.50 |

NON-ALCOHOLIC

Peroni Alcohol Free 74 kcal 330ml 4.50

OTHER BOTTLED

WKD Blue (4%) 275ml 4.50

WKD Orange and Passion Fruit (4%) 275ml 4.50



SOFT DRINKS

Britvic 55 Apple 127 kcal 3.30

J20 Apple and Raspberry 52 kcal 3.45

J20 Orange and Passion Fruit 52 kcal 3.45

Pepsi 135 kcal 3.45

Lemonade Child 1.70 | Small 3.20 | Regular 3.55
5 kcal / 8 kcal / 10 kcal

Pepsi Max Child 1.70 | Small 3.20 | Regular 3.55
1 kcal / 2 kcal / 2 kcal

Diet Pepsi Child 1.70 | Small 3.20 | Regular 3.55
1 kcal / 2 kcal / 2 kcal

Apple Juice 10oz 96 kcal 2.00

Orange Juice 10oz 94 kcal 2.00

Pip Organic Cloudy Apple 77 kcal 2.15

Pip Organic Strawberry and Blackcurrant 74 kcal 2.15

Britvic Slimline Tonic 2 kcal 1.80

Britvic Tonic 38 kcal 1.80

Fever-Tree Ginger Ale 68 kcal 2.30

Fever-Tree Indian Tonic 56 kcal 2.30

Fever-Tree Mediterranean Tonic 74 kcal 2.30

Fever-Tree Slimline Tonic 30 kcal 2.30

WATER

Harrogate Still Water 0 kcal Small 2.50 | Large 4.50

Harrogate Sparkling Water 0 kcal Small 2.50 | Large 4.50



If you have a food allergy, intolerance or coeliac disease, please speak to a team member about the ingredients in your food and drink before you order. Thank you.

GIN *All gin served in 25ml measures*

CITRUS

| | |
|---|------|
| AxleJack (40%) | 3.85 |
| Bombay Sapphire (40%) | 3.85 |
| Gordon's Mediterranean Orange (37.5%) | 3.85 |
| Gordon's Sicilian Lemon (37.5%) | 3.85 |
| Malfy con Arancia (Blood Orange) (41%) | 4.50 |
| Malfy con Limone (Lemon) (41%) | 4.50 |
| Sipsmith Lemon Drizzle (40.4%) | 4.00 |
| Tanqueray 10 (47.3%) | 4.50 |
| Tanqueray Sevilla (41.3%) | 4.00 |
| Tarquin's Blood Orange (38%) | 4.30 |

JUNIPER

| | |
|------------------------------------|------|
| Beefeater Dry (40%) | 3.45 |
| Gordon's (37.5%) | 3.30 |
| Plymouth (41.2%) | 4.30 |
| Sipsmith London Dry (41.6%) | 4.50 |
| Tanqueray (43.1%) | 4.00 |

FLORAL & FRUITY

| | |
|--|------|
| Gordon's Elderflower (37.5%) | 3.45 |
| Beefeater Pink Strawberry (37.5%) | 3.45 |
| GinTing Passion Fruit (42.5%) | 4.50 |
| Gordon's Pink (37.5%) | 3.45 |

| | |
|--|------|
| Hendrick's (41.4%) | 4.00 |
| Kopparberg Mixed Fruit (37.5%) | 3.45 |
| Kopparberg Strawberry and Lime (37.5%) | 3.45 |
| Malfy Rosa (Grapefruit and Rhubarb) (41%) | 4.50 |
| Slingsby Rhubarb (40%) | 4.50 |
| Tarquin's British Blackberry (40%) | 4.30 |
| Tarquin's Rhubarb and Raspberry (38%) | 4.30 |
| Tarquin's Strawberry and Lime (38%) | 4.30 |
| Verano Watermelon (40%) | 4.50 |

SPICED

| | |
|------------------------------------|------|
| Tarquin's Cornish Dry (42%) | 4.00 |
|------------------------------------|------|

NON-ALCOHOLIC

| | |
|---|------|
| Seedlip Grove 42 Citrus 5 kcal | 3.30 |
| Seedlip Spice 94 Aromatic 5 kcal | 3.30 |

SPIRITS *All spirits served in 25ml measures*

LIQUEUR

| | |
|---------------------------------|------|
| Amaretto Disaronno (28%) | 3.75 |
| Archers (18%) | 3.30 |
| Cointreau (40%) | 3.30 |
| Malibu (21%) | 3.30 |
| Tia Maria (20%) | 3.30 |

WHISKY

| | |
|---|------|
| Bells (40%) | 3.30 |
| Bulleit Bourbon (45%) | 4.00 |
| Haig Club (40%) | 4.55 |
| Haig Club Mediterranean Orange (35%) | 3.20 |
| Highland Park (40%) | 4.55 |
| Jack Daniels (40%) | 3.30 |
| Jameson (40%) | 3.30 |
| Johnnie Walker Black (40%) | 3.45 |
| Johnnie Walker Red (40%) | 3.30 |
| Southern Comfort (35%) | 3.30 |
| Talisker 10 Year Old Malt (45.8%) | 3.85 |

BRANDY

| | |
|----------------------------|------|
| Courvoisier (40%) | 3.45 |
| Jules Clairol (36%) | 3.30 |

VODKA

| | |
|---|------|
| Ciroc (40%) | 4.00 |
| Grey Goose (40%) | 4.00 |
| Grey Goose Citron (40%) | 4.00 |
| Smirnoff Red (37.5%) | 3.30 |
| Smirnoff Mango and Passion Fruit (35%) | 3.85 |
| Smirnoff Raspberry Crush (37%) | 3.85 |
| Smirnoff Vanilla (37.5%) | 3.85 |

RUM

| | |
|--|------|
| Bacardi (37.5%) | 3.30 |
| Captain Morgan (40%) | 3.30 |
| Captain Morgan Sliced Apple (25%) | 3.85 |
| Captain Morgan Spiced (35%) | 3.30 |
| Captain Morgan Tiki Mango and Pineapple (25%) | 3.85 |
| Captain Morgan White (37.5%) | 3.30 |
| Koko Kanu (37.5%) | 4.00 |
| Kraken Black Spiced (40%) | 4.00 |
| Twin Fin Barrel Aged (40%) | 3.85 |
| Twin Fin Coconut and Lychee (38%) | 3.85 |
| Twin Fin Pineapple and Grapefruit (38%) | 3.85 |
| Twin Fin Spiced Golden (38%) | 3.85 |


WINE

RED

Spain

El Tiempo & Lugar Tempranillo

175ml 4.85 / 250ml 7.00 / Bottle 19.90

Ripe berry and redcurrant fruit followed by just a touch of exotic spice. 

Central Valley, Chile

Goleta Merlot


175ml 5.30 / 250ml 7.60 / Bottle 21.70

Beautifully easy drinking, fruity red with juicy plums, succulent blackcurrants and soft tannins. 

Mendoza, Argentina

7 Fires Malbec

175ml 6.10 / 250ml 8.75 / Bottle 24.95

Fresh and fruity nose, with flavours of plum, black berries and a touch of vanilla and smoke, supported by sweet and round tannins. 

SE Australia

Sotherton Shiraz

175ml 6.00 / 250ml 8.55 / Bottle 24.45

Juicy, fruity and satisfying, this offers great quality and dark, spicy fruit characters. 

WHITE

Spain

El Tiempo & Lugar Viura

175ml 4.85 / 250ml 7.00 / Bottle 19.90

Dry, light and fresh with flavours of apples, pears and white flowers, with fresh grapefruit. 

Pavia, Italy

Ca' Del Lago Pinot Grigio

175ml 5.10 / 250ml 7.30 / Bottle 20.80

Light and dry, with delicate flavours of apples and pears and a refreshing unoaked finish.

Marlborough, New Zealand

Black Cottage Sauvignon Blanc

175ml 6.60 / 250ml 9.50 / Bottle 27.15

Zesty and mouthwatering with a complex nose full of fresh gooseberry, melon, kiwifruit, crushed herbs and a touch of passion fruit. Packed full of crunchy green apple, peach and jasmine flowers with a delicious line of salinity and a refreshingly dry finish. 

SE Australia

Sotherton Chardonnay

175ml 6.00 / 250ml 8.55 / Bottle 24.45

Great value Aussie Chardonnay with bright citrus and tropical fruit flavours and a creamy texture.

ROSE

California, USA

Canyon Road White Zinfandel


175ml 4.85 / 250ml 7.00 / Bottle 19.90

This wine is light-bodied with hints of strawberry, cherry, and watermelon flavors and a smooth, crisp finish.

Pavia, Italy

Ca' Del Lago Pinot Grigio Rosé

175ml 5.35 / 250ml 7.65 / Bottle 21.90

Just off-dry, fresh and light with delicious peach and strawberry flavours. 

SPARKLING

Veneto, Italy

Bellino Prosecco


Bottle 25.60

Fine, persistent, soft fizz with a hint of sweetness and flavours of apple and pear with a hint of peach.

Veneto, Italy

Freixenet Italian Sparkling Rose


Bottle 8.50

Delicate, iconic and delightfully pink fizz with alluring, sweet red fruits blended in perfectly light, effervescent bubbles. 

Veneto, Italy

Freixenet Prosecco

Bottle 8.50

Clean and fresh with flavours of ripe lemon, crunchy green apple and grapefruit. A luxurious choice with a hint of sweetness and fine bubbles. 

125ml glasses
available
on request.

If you have a food allergy, intolerance or coeliac disease, please speak to a team member about the ingredients in your food and drink before you order. Thank you.

Calories shown are per drink. All prices include VAT. All card and cash tips are shared out to all employees through a system controlled by a team representative. No monies are deducted by Away Resorts. Tips are paid on top of a team member's wage. If you have any queries about how tips are distributed, please ask.

